







## **BIGDIVERSE 2011**

### **NEW GROWTH IN A DIVERSE CLIMATE**

#### **PRESENTED BY THE SHIRE OF KALAMUNDA**

#### **AT THE OPENING OF THE ZIG ZAG CULTURAL CENTRE**

**16 SEPTEMBER – 20 OCTOBER, 2011**

### **INTRODUCTION**

The contemporary art scene is a diverse place, and historically, the hills area east of Perth is rich soil for artists. We are proud to announce this, the first exhibition in our custom-built gallery, which showcases a selection of talent, and celebrates the richness and diversity of Kalamunda and surrounds.

The *bigDIVERSE* exhibition seeks to draw attention to two things; the landscape of the area, and the diversity of talent that thrives here.

We in Kalamunda celebrate the unique beauty and biodiversity of the Darling Scarp and are proud to share its wealth with all guests and anyone who seeks to experience the land in some way; there is the Northern Terminus of the Bibbulmun track, there is the Kalamunda Farmers Market, and there is the annual Walk The Zig-Zag sustainable-living festival, to name but a few. The artworks in this show each give a different glimpse of this beauty and it is through the eyes of local artists that we see it captured.

The world of contemporary art is diverse and new ways to understand the world are constantly being presented. In a community gallery environment one way that we can expect that contemporary art will perform is to stimulate discussion, bringing people together and allowing for the exchange of values and ideas within the community. *bigDIVERSE* features a variety of media from glass, jewellery, ceramics, oil pastels, sculpture and watercolour, and makes an attempt to span some of this breadth in a few small steps.

Look out for new growth in the forest. A seedling has taken hold, heralding an important new chapter in Shire of Kalamunda history, and that of Western Australia.

**GEMMA BEN-ARY** CURATOR







## SCARP

Perhaps it wasn't entirely planned, but then neither was it an accident that a central element of the stunning artwork *Scarp* by Matthew Harding and Malcolm Harris is a beacon or guiding light towards the new era of arts and culture in Kalamunda.

The genesis for the artwork, which comprises the metal and glass beacon or tower, two Jarrah and glass screens, and local Dolerite rock seats, was the surrounding beauty of the Darling Scarp and the Bibbulmun forest. Yet as if by osmosis as the artwork developed over the past two years it came to symbolize the future.

Made from steel pipe carefully selected for its pitted surface and layer of weather resistant oxidization, the beacon or tower is a three-dimensional line drawing representing the contours of the hills leading up to Kalamunda. The 10 mm glass inserts were painstakingly made in four stages of slumping, curving, hand cutting 312 shapes individually then firing with Light Fast Ceramic Glazes to achieve the colour. LEDs light the beacon at night.

At both of the entries to the ZigZag Cultural Centre, stately, undulating Jarrah and glass screens are minimalist yet dignified reflections of the surrounding forests. Re-sawn from wood recycled from the nearby Midland Railway Workshops site, the Jarrah will age and grey naturally and gracefully over time. The vertical insertions of slumped glass unite the screens with the beacon.

Reinforcing this celebration of the big, bold, and diverse culture of visual arts in the Shire of Kalamunda, the ZigZag Cultural Centre gallery opens with the *bigDIVERSE* exhibition – a selection of the many professional artists who live, work, or have been educated in the Shire. Equally exciting are the possibilities that the new gallery space presents for hosting incoming exhibitions, residencies, workshops and seminars from artists in other parts of the state and the nation.

As the Art Coordinator for *Scarp*, it has been a delight to see the artwork and the ZigZag Cultural Centre grow over the past two years; watch the space to see what happens next!

**MAGGIE BAXTER** ART COORDINATOR FOR SCARP

(Dimensions all height x width unless noted)

(COVER )

**VALERIE MCDONALD**

*Zig Zag Cockatoos*, 2010

Oil on canvas

78 x 82 cm

Valerie is an award winning Kalamunda artist who paints stylised graphic Australian landscapes, birds and animals. She started as a fabric artist and in the nineties turned to oil on canvas as her focus.

*"The Zig Zag has always interested me; it's varying colours during the seasons, and at different times of the day."*

(INSIDE COVER )

**SARAH KIERLE**

*Pod Series*, 2008

Handmade Raku-fired ceramic

Dimensions variable

(PAGE 1)

**GEORGE HAYWARD**

*Rocky Pool*, 2011

Acrylic on canvas

800 x 430 cm

"I am pleased that we have a place where local artists can display, and view, and appreciate the work of other artists in an enhancing environment."

(OPPOSITE )

**MATTHEW HARDING AND MALCOLM HARRIS**

*Scarp*, 2011

Jarrah, local dolerite, recycled glass, steel

4000 x 400 cm (diameter)

The inspiration for this public artwork was the beauty of the surrounding area; the Darling Scarp and the Bibbulmun forest. The artwork symbolizes a beacon that lights the way toward the future for Kalamunda. The artwork is visible in the courtyard of the Cultural Precinct.

**ARTISTS**

**AUDREY FERNANDES-SATAR**

**CEDRIC BAXTER**

**CHRIS OXBERRY**

**DAN SHERIDAN**

**GEORGE HAYWARD**

**HELEN HAYWARD**

**ISOBEL VENUS**

**JANET YATES**

**JESSICA JUBB**

**JOHANNES PANNEKOEK**

**KIARA RECHICHI**

**MALCOLM HARRIS**

**MATTHEW HARDING**

**MIIK GREEN**

**MIKAELA CASTLEDINE**

**MOIRA COURT**

**PENNY MADDISON**

**ROBIN DALE**

**ROBYN BEARDSSELL**

**SARAH KIERLE**

**SHIRLEY SPENCER**

**STEPHEN CASTLEDINE**

**SUSAN CARAMELLI**

**URSULA WILDISEN**

**VAL MCDONALD**



### CEDRIC BAXTER

*The Road From There, 2009*

Oil pastel on paper

50 x 60 cm

Cedric Baxter has lived in the Shire of Kalamunda since 1968 and is a significant name in Western Australian art, with representation in galleries in WA, the Eastern States, and overseas. His focus is on the human form; dancers, myths and legends; with occasional forays into landscape, and he paints in all media but oils.

*"I applaud this new move by the Shire to acknowledge and support artists."*



### STEPHEN CASTLEDINE

*Two Crows, 2011*

Watercolour

77 x 65 cm

*"I am delighted that Kalamunda now has a focal point for artists ... this contemporary gallery space will be the perfect venue, and I look forward to exciting events in the future."*





## SUSAN CARMELII

*Gully Falls, 2008*

Oil on Board

92 x 61 cm

*"With scenic vistas across the coastal plains, secluded creeks, orchards in regimental rows and bustling markets, Kalamunda has abundance to share. I find beauty in the landscape and attempt to explore and portray this. It is exciting to have our own Centre as a platform to project our creativity from."*



## CHRIS OXBERRY

*West Australian Christmas Trees 2010*

Acrylic on canvas

128 x 68 cm

*"The new cultural centre will add another dimension to this unique part of WA, and I am looking forward to contribute to this inaugural exhibition at the gallery."*

## JOHANNES PANNEKOEK

*Infinite (edition # 3 of 3), 2011*

Mild steel

400 x 400 x 400 cm (h x w x d)

Johannes is an artist and sculptor who originally studied engineering at UWA in 1976 before commencing a twenty year career in graphic art, and now pursues the visual arts. In 2007-8 he studied environmental art at Swan and Central TAFE. He has exhibited at Sculpture by the Sea in Cottesloe, and his work appears in various private and corporate collections in Western Australia.

*"The new cultural centre with its specialised gallery presents and opportunity for local artists to exhibit collectively or individually. I find it encouraging as a local artist."*





### HELEN HAYWARD

*Beyond*, 2011

Acrylic on canvas

500 x 520 cm

*"I am very happy to see this new space for displaying works of art, especially those of local artists."*



### MIKAELA CASTLEDINE

*Blue City Series*, 2010

Print on canvas

130 x 150 cm

Mikaela has returned to live in Kalamunda after having grown up in the Perth hills. She is the coordinator of the Kalamunda Open Studios and is highly active in the community. She believes in the rich talent that this area holds, and is keen to see this pool of talent benefit the community as a whole. She has worked as an artist for nearly twenty years, participated in many solo and group shows, and practises from her 'art-house'; a purpose-built tree-top studio that expects creativity from all who enter the front door. *"There are many wonderful artists hidden away amongst the trees, and I am so happy that we will all finally have a place to call home."*



### ROBYN BEARDSSELL

*Rock and pebble series*, 2011

Pit-fired ceramic

Dimensions variable, each component approx. 15 cm diameter

These pieces are pit-fired – first they are fired in a kiln, then placed in a sawdust pit in the ground, covered with wood and fired over several hours. The intricate colours and patterns on the pots are produced by the flames, heat, smoke and ash during the firing process, thus making each piece unique. Living in the Kalamunda environment with a bush block allows me the opportunity to create this type of work.



**URSULA WILDISEN**

*Forest Country (series of three), 2011*

Acrylic on canvas

750 x 100 cm (each)



**JANET YATES**

*Fox's ... Kangaroo on the Zig Zag, 2009*

Acrylic on canvas

194 x 154 cm

Janet is a committed Gooseberry Hill artist who paints vast and vigorous abstracted landscapes that are a response to physical experiences within the environment.

*"I am willing to keep the finger on the pulse to provide stimulus to a captivated and curious audience."*



## SARAH KIERLE

*Pod Series, 2008*

Handmade Raku-fired ceramic

Dimensions variable

Kalamunda is the starting point for Sarah's career as a studio ceramicist; where she has built her 'lean-to' studio and started her family. She is currently exploring ideas behind seed-pods with hand-built, Raku-fired ceramic pieces that are influenced by seeds and pods found near her home. The Raku firing process produces a smoky quality that is a reminder of the impact that fire has had in shaping this ancient landscape. The smoky smell that lingers on the pots sparks memories of campfires, bonfires, or bushfire.

*"I have always had a connection to the rural landscape and find the bushland of the state forest and Darling Scarp a source of inspiration."*







### ISOBEL VENUS

*After the Fire, 2010*

Oil on canvas

50 x 200 cm

*"I have lived and worked as an artist in Gooseberry Hill for the last thirty years. It is wonderful to see a splendid building to celebrate the artists and craftspeople of this community."*

### MIIK GREEN

*Oil Slick Purpurea, 2011*

Mixed media on board

200 cm x 180 cm

A former Kalamunda Senior High School student, Green's work is informed by the sensual nature of materials; biological forms, seed pods and fungus. There are elements of growth, illusion and seduction present in the work.



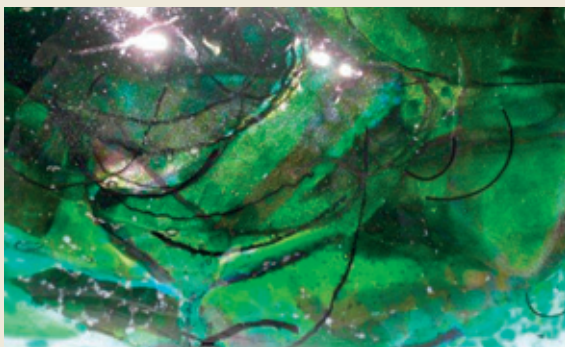


**DAN SHERIDEN**

*Red Cap Robin, 2011*

Oil and Acrylic

100 x 150 cm



**SHIRLEY SPENCER**

*Wind Swept (detail), 2011*

Fused Glass

30 x 40 cm

Shirley has lived in Kalamunda since 1970, and she takes her inspiration from the surrounding bush with its many forms and patterns and interprets these aspects in her glass making.

*"I'm excited that we now have a cultural centre and gallery space where local artists can show their works."*





### PENNY MADDISON

*Sunflowers I*, 2009

Watercolour on paper

70 x 70 cm

*"These sunflowers were bought at the Kalamunda grower's market, painted in my Gooseberry Hill studio, (which is made with local rammed-earth), framed at the White Room picture-framers here in town, and now here they are, in the local gallery. Local and proud!"*

### MOIRA COURT

*I wish I got quendas in my kitchen like Fran does*, 2011

Mixed media on canvas

91.5 x 76 cm

Moira is a published children's book illustrator and resident of Kalamunda, also part of the Open Studios event. Her work is playful and sweet and lately she has been drawing inspiration from the native animals of Australia; quendas, bandicoots, and dingoes.

*"I am so excited to finally be able to share my creations with the folks of my community and enjoy the work of other local artists in this beautiful shiny new gallery."*



### ROBIN DALE

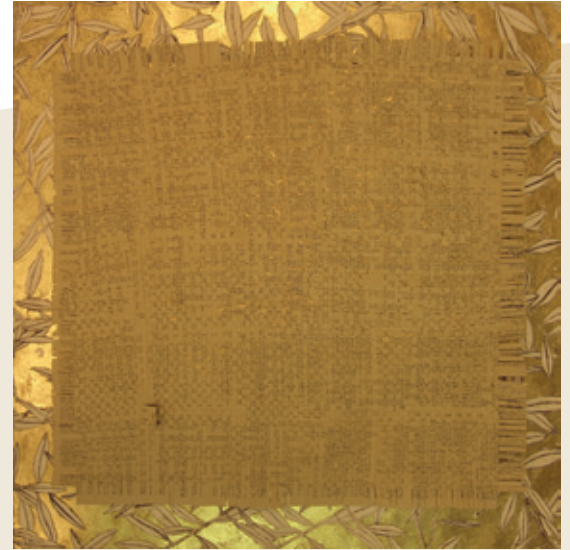
*Ancient Karri (triptych)*, 2010

Fibre and acrylic on canvas

120 x 270 cm

*"This magnificent tree has survived fire, and man. Gnarled and pitted, smooth and layered, it's physicality is confronting. A habitat for birds, animals and insects, it is a priceless sculpture of this unique land."*





### KIARA RECHICHI

*To be Free* (detail left), 2009

Etching, gold leaf and collage

67 x 67 cm

*"Kalamunda is home to many creative people and the cultural centre gives us all a chance to experience and enjoy this creativity."*



### JESSICA JUBB

*Who does dirt belong to? Can dirt really have an owner?*, 2010

Recycled sterling silver jewellery, cotton threads

Dimensions variable

Jessica is a hills-based artist-jeweller who is interested in natural forms and ecology in her work. Her 'Nest Series' is a result of investigations into the lives of particular West Australians, such as environmental scientist from the Perth hills, Emily Stanton-Clements. Emily's environmental work helps ensure that our unique land is cared for.

*"The Shire of Kalamunda is ensuring that our cultural environment is sustained, nourished and encouraged. It is fantastic to see hills artists embraced in such a glorious way."*





**AUDREY FERNANDES-SATAR**

*Why from the nests the birds have flown?*, 2008

Series of five, mixed media drawings

23 cm x 25 cm (each)



**ZIGZAG  
CULTURAL  
CENTRE**

Visitor Centre Art Gallery Zig Zag Café

Opening hours: Mon to Fri: 9.00am – 5.00pm Sat, Sun: 10.00am – 3.00pm

50 Railway Road, Kalamunda T: (08) 9257 9998

E: [zzcc@kalamunda.wa.gov.au](mailto:zzcc@kalamunda.wa.gov.au) w: [www.zzcc.com.au](http://www.zzcc.com.au)



**shire of  
kalamunda**